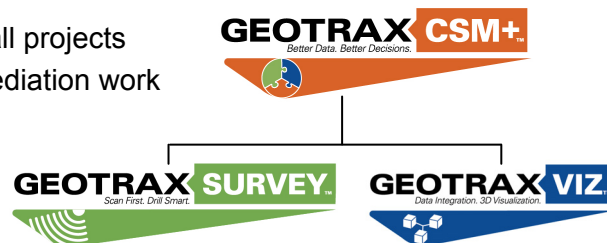


GeoTrax CSM+™ Conceptual Site Model Development Process

- ◆ GeoTrax Survey™ subsurface scanning to depths up to 400 feet
- ◆ GeoTrax Viz™ data integration and 3-D visualization standard for all projects
- ◆ Ultra-high resolution CSMs enable clients to focus drilling and remediation work
- ◆ Collaborative process provides faster site cleanup at lower cost

Applications

- ◆ Locate LNAPLs, DNAPLs, PCBs and other contaminants
- ◆ Map hydrogeology and contaminant preferential flow pathways
- ◆ Track injectate & monitor remediation effectiveness
- ◆ Delineate impacts to subaqueous sediments via surveys over water



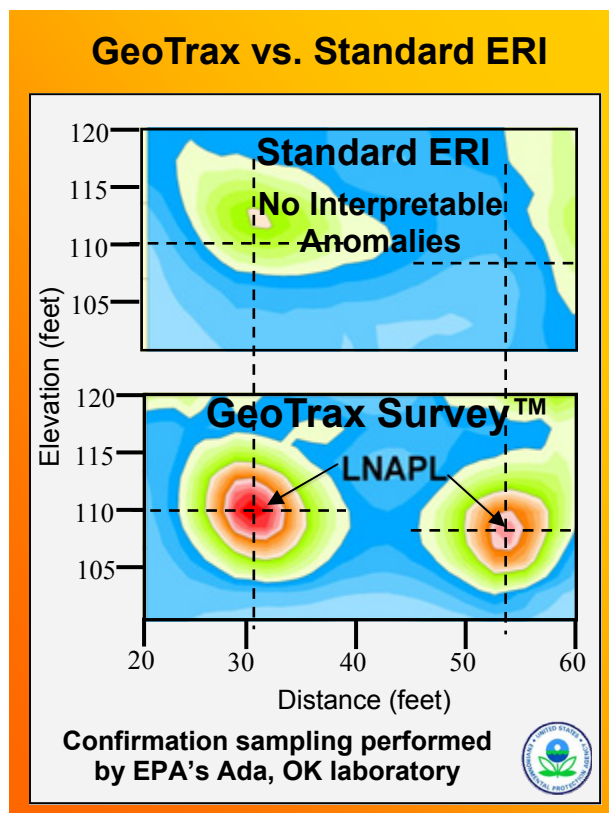
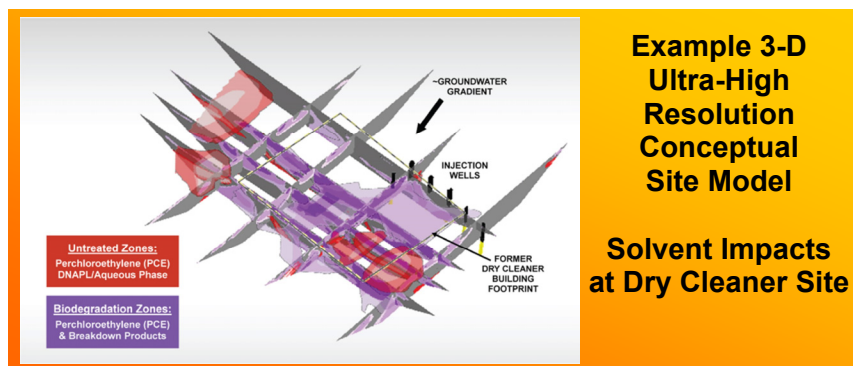
The Aestus Difference

GeoTrax Survey™ Subsurface Imaging

- ◆ More accurate than standard electrical resistivity imaging (ERI)
- ◆ Intellectual property developed at Oklahoma State University
- ◆ “Drillable” images provide targeted drilling/remediation
- ◆ Geology independent (works in clay, silt, sand, bedrock, etc.)

GeoTrax Viz™ Data Integration

- ◆ 2-D figures: GeoTrax Survey™ images with historical data
- ◆ 3-D visualization model: Aestus’ imagery with drilling data
- ◆ Capitalizes on clients’ investment in historical drilling data
- ◆ Yields ultra-high resolution site characterization CSMs



Past Performance & Representative Clients

Founded in 2001, Aestus has served over 125 clients (USA and Internationally). Historical client markets include: Federal, State, and Local Regulatory Agencies, Environmental Consulting Firms, Industry Clients, Military Clients & Insurance Companies

- | | | |
|-------------------------------------|-------------------------|-------------------------------|
| ◆ US EPA | ◆ NYSDEC | ◆ MWH (USA and Taiwan) |
| ◆ US Air Force | ◆ AMEC (USA and Europe) | ◆ AECOM/URS |
| ◆ US Navy | ◆ Burns and McDonnell | ◆ Chevron |
| ◆ CO Oil and Public Safety Division | ◆ CH2M Hill | ◆ Lockheed Martin Corporation |
| ◆ New Mexico Environment Department | ◆ ERM | ◆ Northrop Grumman |

Company Information

1.888.GEO.TRAX
info@aestusllc.com
www.aestusllc.com

DUNS: 619560654
 CAGE: 5S1N3
 NAICS: 541360
 SIC # = 8713
 EIN: 20-4012079
 PSC: B518