



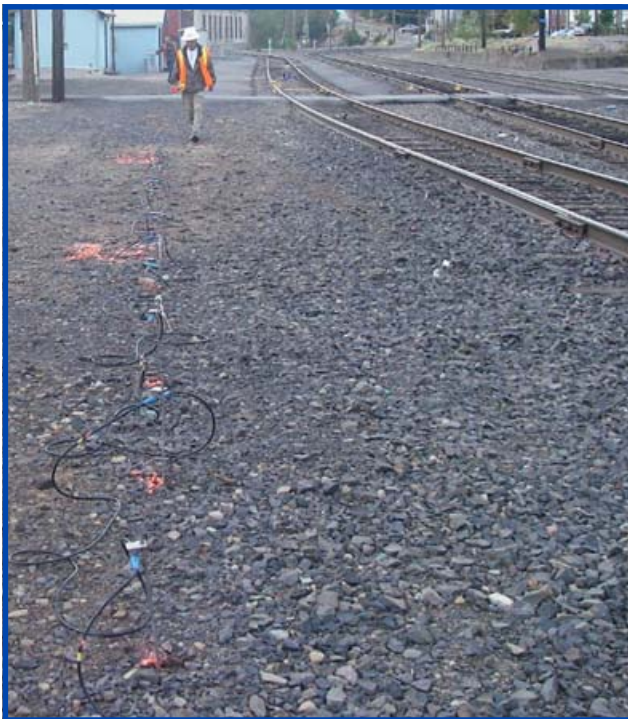
Frequently Asked Questions (FAQs)

GeoTrax Survey™ Field Work at Railroad Sites (Page 1 of 4)

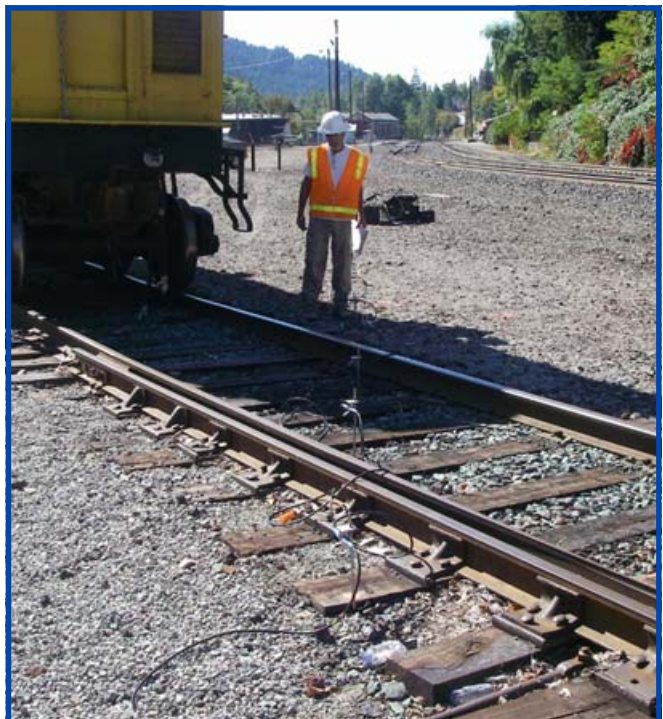
FAQ: Does Aestus have experience working near railroad tracks?

ANSWER: Yes. Aestus has performed several projects where our survey lines run across and parallel to railroad tracks.

Parallel to Tracks:



Crossing Tracks:





Frequently Asked Questions (FAQs)

GeoTrax Survey™ Field Work at Railroad Sites (Page 2 of 4)

FAQ: Can GeoTrax Surveys™ cross railroad tracks? If so, how is this accomplished?

ANSWER: Yes, GeoTrax Surveys™ can cross railroad tracks. The survey lines can go over the tracks and in some cases electrode cables can be threaded underneath of the tracks. The latter method allows train traffic to continue during the data collection period.

Over Tracks:



Under Tracks:





Frequently Asked Questions (FAQs)

GeoTrax Survey™ Field Work at Railroad Sites (Page 3 of 4)

Logistical FAQs

FAQ: Is Aestus confident working near operational railroad tracks?

ANSWER: Yes. Aestus' crew has had specific training for working near railroad tracks. They also understand that they need to follow rules and regulations of the governing railroad authority.

FAQ: Do the railroad operations need to be shut down while Aestus is on site?

ANSWER: Depending on the railroad's governing body's regulations, GeoTrax Survey™ work within ~25 feet of an active line or any electrode cables crossing overtop of the rails will require no train traffic for duration of approximately 2.5 hours per survey line. Sometimes, GeoTrax Survey™ work can be completed during non-operational hours for trains.

FAQ: Right of entry/permissions

ANSWER: Aestus relies on our clients to attain the right of entry permits/permissions necessary to work on railroad property.

FAQ: Do you need to pre-drill electrode stakes locations by railroad lines?

ANSWER: This will be assessed on a case-by-case basis. Generally, the ballast/fill near the tracks is too hard to pound stakes and pre-drilling a 1/2-inch diameter holes for the stakes is required. Once the electrode stakes are removed, the holes typically self-seal and do not need to be patched.



Frequently Asked Questions (FAQs)

GeoTrax Survey™ Field Work at Railroad Sites (Page 4 of 4)

Health & Safety FAQs

FAQ: Do Aestus' field staff have certifications and training specific to working near railroads?

ANSWER: Aestus field crew members currently have or have recently held railroad safety certifications including:

- Roadway Worker Protection www.railroadeducation.com
- Railroad specific safety course(s)

Depending on the railroad, additional training or safety classes may be required.

FAQ: Is Aestus experienced with railroad safety regulations?

ANSWER: Yes. Aestus will comply with our clients' railroad specific regulations in addition to our own safety guidelines.

FAQ: Does Aestus have a flagman as part of its field crew?

ANSWER: No. Aestus relies on our consulting firm clients and/or its railroad client to provide one or more flagmen who will coordinate track time and communicate with any active trains in the work vicinity.

FAQ: Does Aestus have special equipment or safety gear for railroad work?

ANSWER: Typically, no special GeoTrax Survey™ equipment is required. Aestus will follow safety regulations from the governing railroad, which usually includes wearing reflective safety vests, hard hats, steel toed boots, and safety glasses.