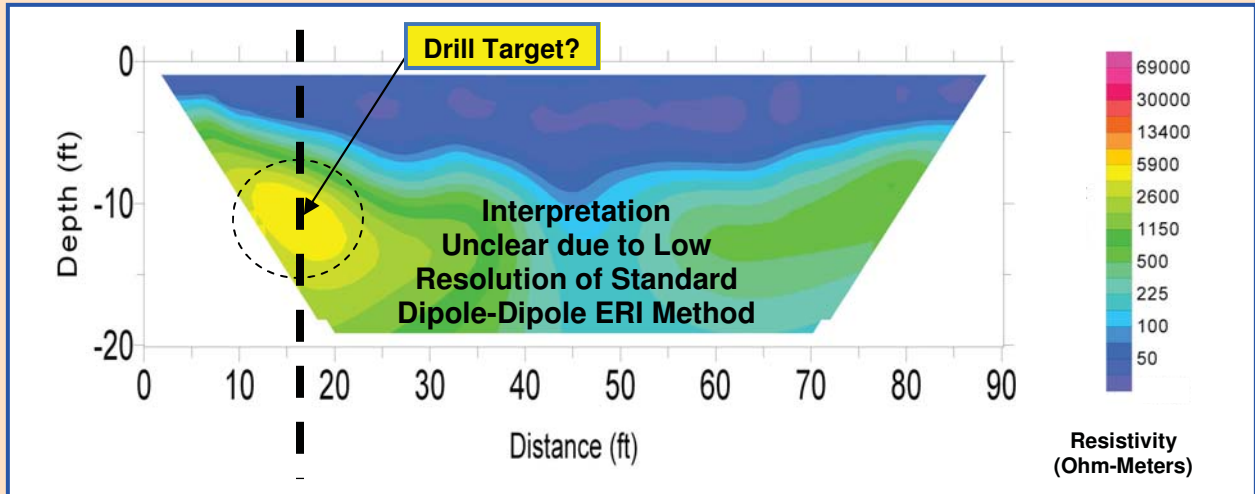




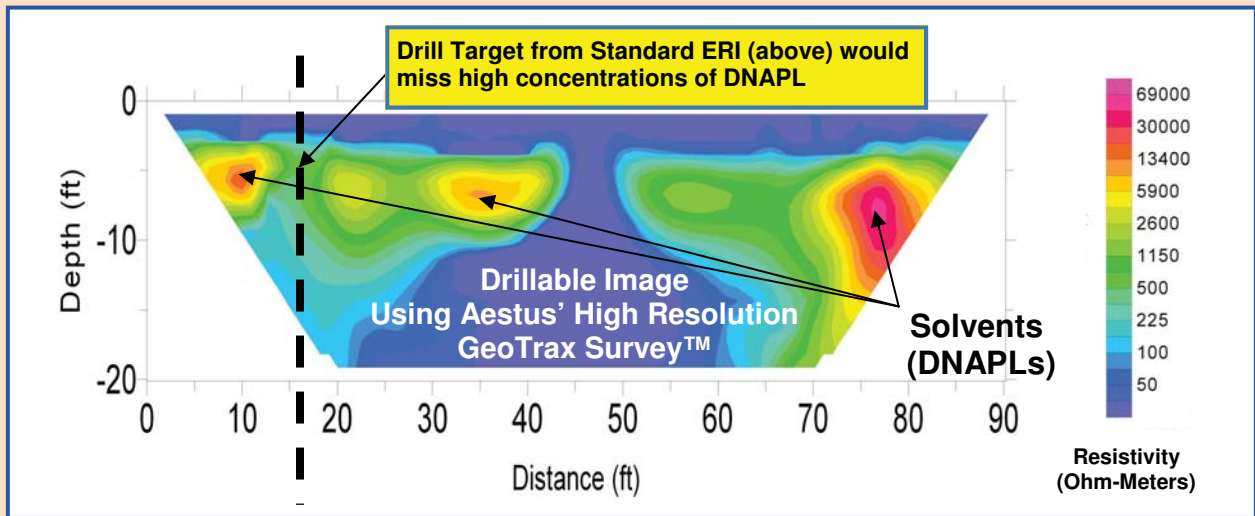
Locating DNAPLs - Technology Comparison

Standard ERI versus GeoTrax Survey™

Standard Electrical Resistivity Image (Standard ERI)



Aestus' High Resolution Electrical Resistivity Imaging (GeoTrax Survey™)



- Standard ERI and Aestus' GeoTrax Survey™ used to located DNAPLS (dense non-aqueous phase liquids) in hazardous waste landfill; Surveys performed at same location on same day using both technologies.
- Standard ERI using Dipole-Dipole array did not have enough resolution to produce meaningful interpretation and drillable targets
- Aestus' proprietary high resolution ERI (branded as GeoTrax Survey™) has enough resolution to produce meaningful results and drillable targets
- Aestus' technology developed and proved out at Oklahoma State University and effectiveness has been confirmed by EPA laboratory and consulting firms.